



Empowering Women in the Accounting and Financial Professions Since 1938
San Diego Chapter No. 17 Founded 1949

PRESIDENT

Gayle Barrett
10616 Scripps Summit Court
San Diego, CA 92131
Phone: 858-795-2055 (W)
E-mail: gayleb@nshd.com

MEMBERSHIP DIRECTOR

Glenda Moehlenpah
1081 Camino Del Rio S. # 118
San Diego, CA. 92108
Phone: 619-298-1325 (W)
E-mail: aswamembership@yahoo.com

NEWSLETTER EDITOR

Karen Ballek
137 Frances Drive
El Cajon, CA 92019
Phone: 619-744-4040 ext. 2022(w)
E-mail: bythebookske@yahoo.com

**HR Minefields
Ann Towle-Mason, MA, SPHR**

Ann Towle-Mason consults with organizations on a wide variety of organizational and human resource issues. For more than fifteen years Ann has served as a senior-level HR leader and business partner. After achieving success in the hospitality and high-tech industries, Ann started her own business, HR SOURCE Consulting, Inc., where, as a hands-on business partner, she builds strong relationships with her clients to develop innovative solutions to business and HR challenges. Recognizing that as businesses grow, leaders are juggling multiple priorities with little time to devote to the complex and ever-changing myriad of employment laws or to the development of an effective HR infrastructure, Ann uses her years of experience to coach clients by identifying opportunities and guiding them through the design and implementation of HR systems and strategies to create a culture that is in alignment with positive business results. Ann has a bachelor's degree in business management and a master's degree in organizational management, and is a certified Senior Professional in Human Resources (SPHR). She is a part-time faculty member of the University of Phoenix facilitating graduate and undergraduate courses in organizational behavior, strategic management, and human resources, and she is also an instructor for the HR Management Certificate Program at San Diego State University. She is President Elect of the San Diego Chapter of the Society for Human Resources Management (SHRM).

**Monthly Dinner Meeting
Thursday, April 21, 2005**

Speaker: Ann Towle-Mason, MA, SPHR
H.R. Minefields

Time: 5:30p.m. Registration/Networking
6:15p.m. Dinner
7:00p.m. Speaker Presentation

Place: Prime Hotel (formerly the Wyndham)
5975 Lusk Blvd., (east of I-805 off Mira Mesa Blvd.)
Phone: 858-558-1818

Cost: \$25 Members Prepaid \$29 at door
\$30 Guests Prepaid \$34 at door
\$20 Students Prepaid \$24 at door

Menu: California Fresh Buffet
Sunburst Salad with Mesclun Greens with Orange Segments, Red Onions, Avocado, and Champagne Vinaigrette; Sweet Watermelon Wedges; Potatoes Au Gratin; Stuffed Chicken Calif. Rolled with Avocado and Melted Cheese; White Fish with Tequila Lime Butter. Coffee and Tea. Vegetarian entree is available upon request.

RSVP: E-mail rsvps to aswasandiego@yahoo.com. Pre-payments must be received by Monday, 4-18. Pre-pay using paypal to aswasandiego@yahoo.com or by check to ASWA, c/o Gayle Barrett, PO Box 609, Cardiff, CA 92007

From the President's Office

Hello to All,

Over the last month, I have talked to a number of people who have been active on the board this year and people who have been active in ASWA in prior years. One of the things I have learned from these leaders is how important it is for ASWA to be a place for friends to meet.

Some members recruited their friends into ASWA and then recruited them on to the Board. Member meetings and Board meetings became a way to see each other and to stay in touch. Is that great or what? This knowledge has made me decide to convince a few former coworkers and people I was in school with to join or to come to meetings.

In the past, the Chapter has promoted the friendship aspect in other ways. Former president **Jen Borrromeo** told me about the ASWA happy hours the chapter used to hold. Former president **Tanya Sweeney** told me about how the holiday social meant a great deal to people. Former president **Marilou Pennington** told me about another ASWA chapter she visited in the course of her work. That chapter had non-meeting dinners that allowed members to enjoy a meal out and to have the opportunity to chat with other members without all the rush of business associated with the member meetings. According to that chapter, it was one of the best things they have ever done in terms of strengthening the chapter.

It was the lure of friendship that first got me interested in being on the board. When I was a new member, I heard board members talk about how being on the board provides a wonderful way to develop some very meaningful relationships with some great people. It is true.

It is my hope that our chapter will be able to do more to promote friendship in the coming year. I encourage some of the friendship networks within ASWA to return to using meetings as a way of staying in touch. Email each other and ask, "Are you going to the next meeting?" Maybe some of the activities we have planned such as charity walks will give people an opportunity to enjoy each other. We are trying to have a strong committee structure in the coming year. That can be a place to forge stronger relationships. I suspect we will try some of the things done in the past, such as happy hours or non-meeting meals. Come and bring a friend. Invite a friend to our PR dinner on June 2.

I often describe ASWA as the friendliest accountants in town. It is time to nourish ourselves with the benefits that friendship can provide.

Gayle Barrett
President



Announcements

Employment -Need a job or have an opening? Please contact the Chairman of the Employment Committee, **Jeanette Ding** at 858 452-2626 or Jeanette. Ding@roberthalf.com

Free Raffle Tickets—It's easy to earn free raffle tickets! Simply bring a guest to a dinner meeting. Each time you bring a guest, you will received one free raffle ticket for that night's raffle. Keep in mind that all proceeds from our raffle go into the Chapter Professional Development Fund.

Raffle— **Nancy Meyn** reports that the February/ March raffle raised \$ 66.00 and the Becker Course for \$ 1,600.00. WOW! Thank you to everyone who contributed to the raffle. If you can donate a prize for the next raffle, your contribution would be much appreciated. Please contact **Nancy Jacobsen** at 858.455.7888.

A note from Karen Ballek OUT OF THE ASHES

I am proud to say that my family and I are in our new home! All the hard work and personal commitment has paid off. We officially received our final inspection and moved in on March 30, 2005. It has truly taken these last few days to realize..."it sure is good to be home"! This experience has simultaneously humbled, enriched, and strengthened my family and myself. Our entire world changed on October 26, 2003, and we can tell you "first-hand", that 520 days is a long time to be displaced. At times we needed help, at times we needed perseverance, at times we needed guidance, and sometimes we just needed someone to talk to. My Husband, our children, and I want to thank you all for your support, your compassion, your gifts and especially all your thoughts and prayers.

"In prosperity, our friends know us; in adversity, we know our friends." ~ John Churton Collins (1 848-1908)

Volunteers

These wonderful people heeded the call to volunteer. **Kathy Culver** and new member, **Nicole Blazie** have agreed to help with fundraising. **Lara Waddell** is going to coordinate the various fundraising activities. **Tami Brennan** is going to help our chapter from home as her children make it difficult to attend as many meetings as she would like. We can definitely use Tami for one of the many chapter jobs such as keeping our member records current or proofing the newsletter. **Ken Shames** has agreed to contribute articles to the newsletter and help with PR. **Marilou Pennington** who arranged all the speakers for the National ASWA is going to help with scheduling speakers. Others, including **Lisa Anguiano** and new member, **Tracy Bolton** have agreed to help in ways yet to be specified. Even if you only have 15 minutes a month to contribute and even if you can rarely come to meetings, you can still make a very meaningful contribution to our chapter.

Jeanette Ding, current Past President of our chapter and National Director is involved on the national president's council. In that position, it is her responsibility to contact chapters that are failing. Jeanette tells me that the common denominator in chapters that are dying is that only a few people do all the work. Those people get burned out and the chapter ceases to exist. Many hands make light work. Few hands make burned out leaders and dying chapters. Don't let that happen to our chapter. You will get more in return than you give.

Membership Corner

Dinner Hostess—In an effort to continue to be the “friendliest accounting group on town” we are providing dinner hostesses to new members and guests. If you would like to volunteer to be a dinner hostess, please contact **Glenda Moehlenpah** at awsamembership@yahoo.com.

Membership Renewals—Just a reminder that it's **not too late to renew** your membership. You don't want to miss out on the great benefits of belonging to ASWA! These benefits include strong network of personal and professional relationships, information about local employment opportunities, opportunities to develop your leadership and business management skills, monthly chapter newsletter, stimulating presentations, inexpensive CPE credits, interesting conversation with friendly accountants, nice meals, raffle prize, and opportunities to help with scholarships and charitable activities.

You can even renew your dues online. Simply go to www.aswa.org to access your renewal form and make your secure payment online via credit card. Look for the heading “Renew Your Dues Online” located on the home page. The process only takes a few minutes to complete. Or you can print the form and send it with your payment to ASWA's lockbox. The complete instructions are on the website. If you would like assistance or need a duplicate renewal notice sent by regular mail, feel free to contact **Glenda Moehlenpah**, Membership Director.

Name Badges—Have you lost or misplaced your ASWA name badge? Or do you have a name change? You can obtain a replacement badge anytime by contacting **Glenda Moehlenpah** to order a new one.



Member Focus

Do you have exciting news to share? Then go ahead and toot your horn! We would like to hear about professional achievements, job changes, academic accomplishments, engagements, weddings, births, etc. Or, report the good news for someone else. Submit your announcements for next month's Member Focus to the Editor.

Nancy Meyn has a name change and a new email
 Nancy Jacobsen
 Sr. Account Manager
Ajilon Finance
 p: 858-455-7888 ext 210
 f: 858-453-3373
 nancy.jacobsen@ajilonfinance.com

Check out our web site for the latest information regarding meetings and ASWA San Diego: www.aswasandiego.org

ASWA is a not-for-profit membership organization with the purpose of enabling women in all fields of accounting to achieve their personal, professional and economic potential and to contribute to the future development of the profession.

New Members

Transfers from other Chapters

- Kenneth Shames
- Brenda Sparks

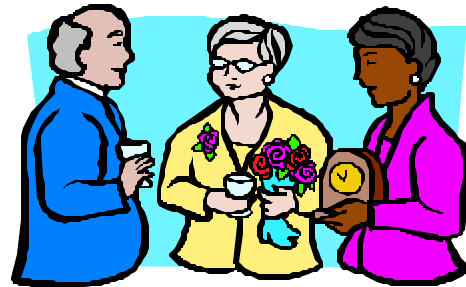
New Regular Members

- Tracy Bolton
 - Karen De Los Reyes
- #### New Affiliate Members
- Nicole Blazie
 - Mark Edmead



Member Birthdays

Karen De Los Reyes	4/14
Jeanette Ding	4/16
Mila Patacsil-Halbig	4/24
Karen Emge (Balleck)	5/02
Judith Noyes	5/07
Pearl Kugel	5/13
Mary Erlenborn	5/18
Stacy Rollins	5/24
Christina King	5/27



CALENDAR OF EVENTS

- Thurs. Apr. 21** **Board Meeting-4:45 p.m.**
Monthly Dinner Meeting-5:30 p.m.
 Prime Hotel
 5975 Lusk Blvd., Sorrento Mesa
 Phone: 858-558-1818
 All are welcome!
- Fri. Apr. 29** **Newsletter Deadline**
 Please submit any news, announcements or job opportunities to Karen Ballek at bythebookske@yahoo.com or via phone at 619-672-1998
- Thurs. June 2** **Annual Public Relations Gala**
PR Dinner / Induction of 2005-2006 Board
 All are welcome!